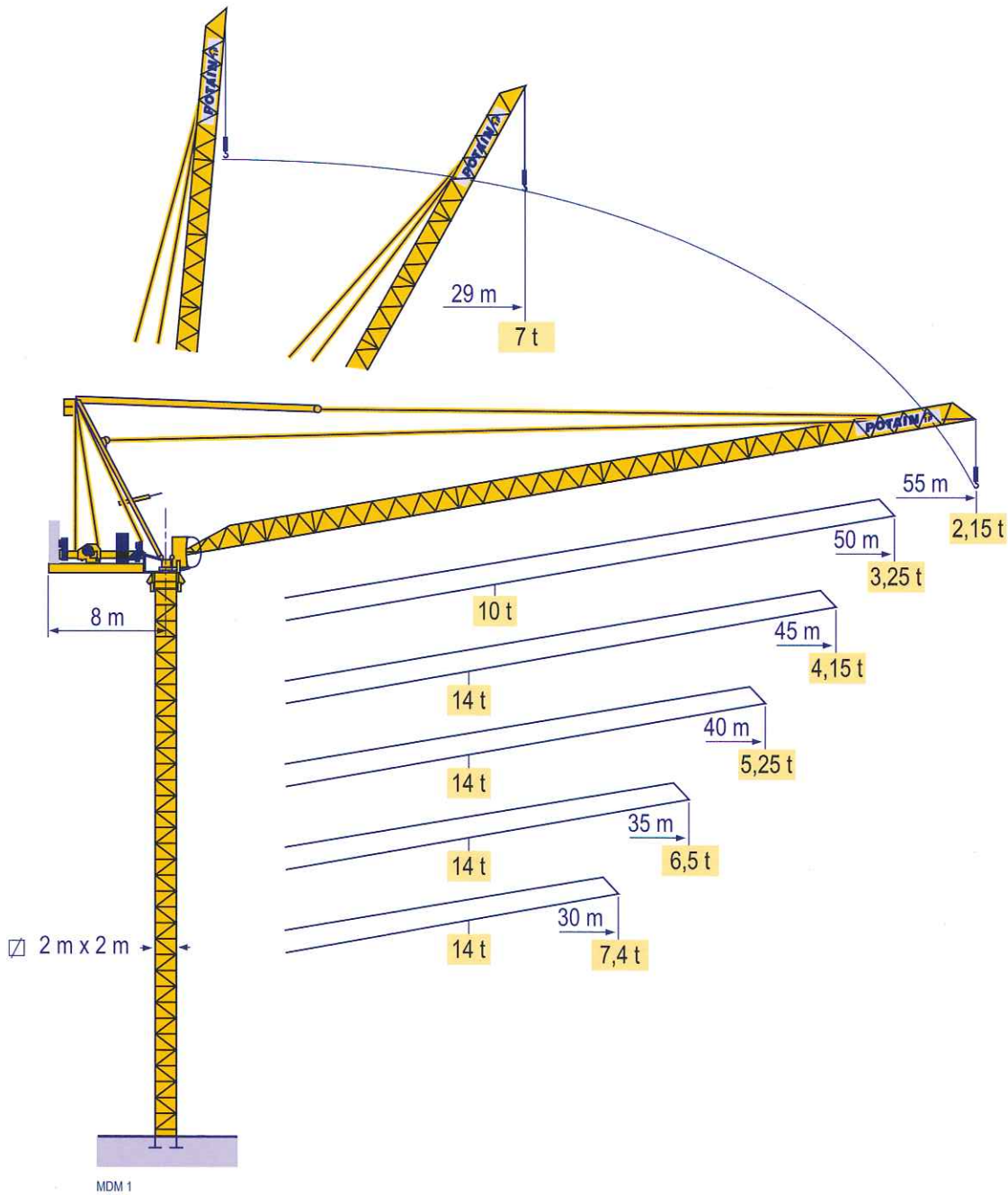


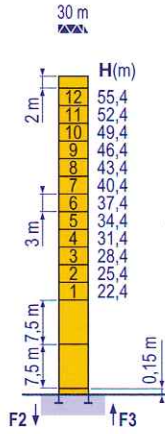
MCR 225 A



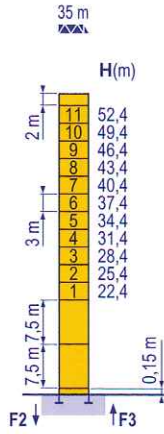
Masts / Reactions

MDM1

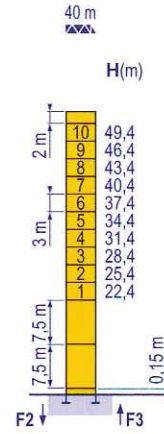
Telescopic 2 m



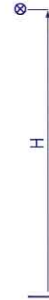
P 21 A	
F2	● 164 t
	■ 230 t
F3	● 124 t
	■ 190 t
▲	61 t



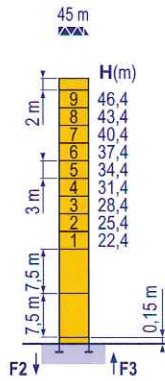
P 21 A	
F2	● 162 t
	■ 230 t
F3	● 122 t
	■ 190 t
▲	60 t



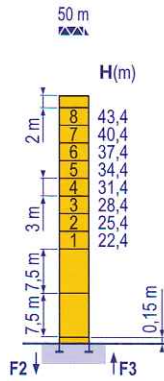
P 21 A	
F2	● 159 t
	■ 228 t
F3	● 120 t
	■ 189 t
▲	59 t



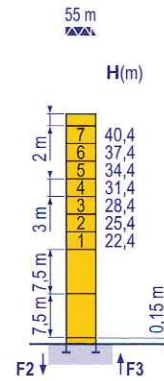
Telescopic 2 m



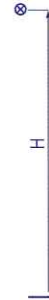
P 21 A	
F2	● 156 t
	■ 224 t
F3	● 117 t
	■ 186 t
▲	58 t



P 21 A	
F2	● 153 t
	■ 222 t
F3	● 115 t
	■ 185 t
▲	57 t



P 21 A	
F2	● 151 t
	■ 217 t
F3	● 114 t
	■ 181 t
▲	56 t



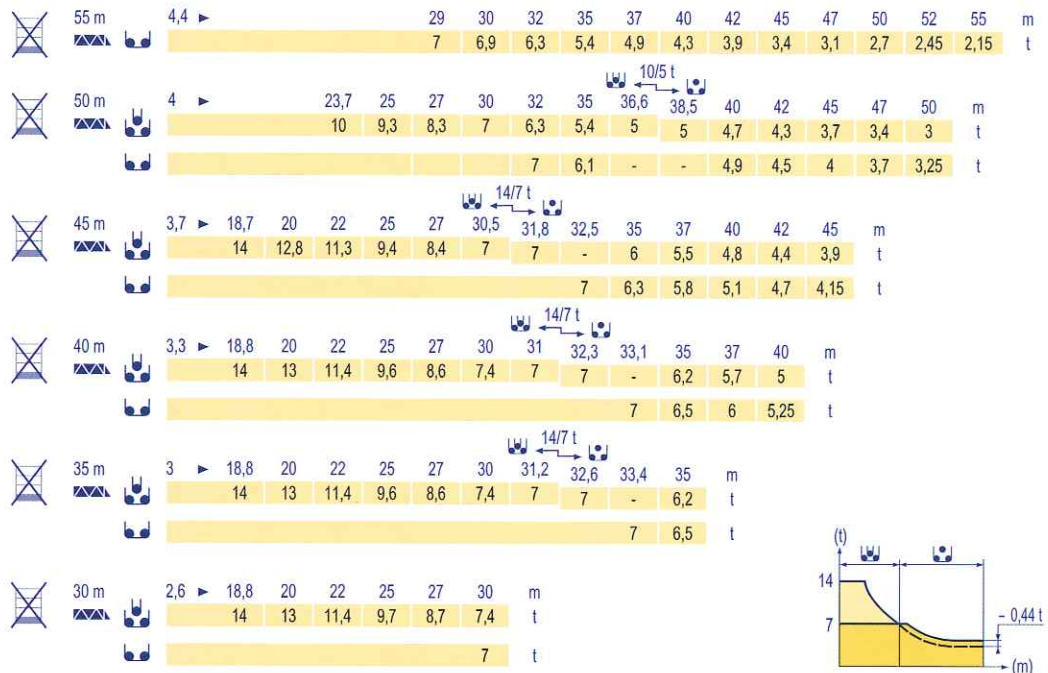
MCR 225 A

GB

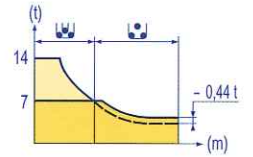
- Reactions in service
- Reactions out of service
- ▲ Without load, ballast (or transport axles), with maximum jib and maximum height.

Load diagrams

MDM 1

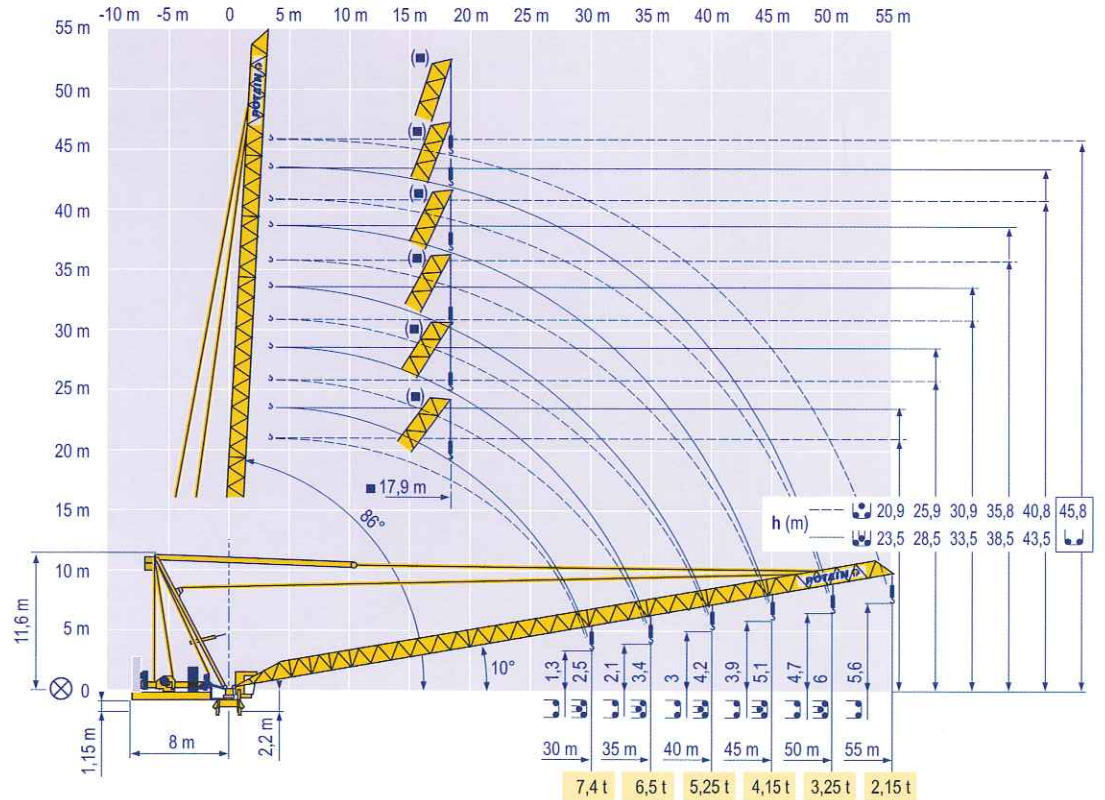


= - 0,1 t



Luffing jib

MDM 1



MCR 225 A



GB



- Load diagrams without jib-end inspection platform
- Load diagrams with jib-end inspection platform deduct 0,1 t
- Jib hinge shaft
- Weathervaning position

Mechanisms

MDM 1

MCR 225 A - 50 Hz													hp	kW													
	75 LVF 35	m/min	0	→	40	→	46	→	81	→	96	0	→	20	→	23	→	41	→	48	75	55	766 m				
	Optima	t	7		6		3		2,25	14		12		6		4,5											
	100 LVF 35	m/min	0	→	52	→	62	→	108	→	140	0	→	26	→	31	→	54	→	70	100	75	1146 m				
	Optima	t	7		6		3		1,75	14		12		6		3,5											
	150 LCC 35	m/min	0	→	84	→	100	→	124	→	166	→	200	0	→	42	→	50	→	62	→	83	→	100	150	110	1004 m
		t	7		5,25		3,5		1,75		0,875	14		10,5		7		3,5		1,75							
	100 V VF 40	m/min	2 min											100	75												
	RVF 162 Optima +	rpm	0 → 0,7											2 x 7,5	2 x 5,5												
CEI 38			IEC 38											kVA													
400 V (+6% -10%)														75 LVF : 165 kVA 100 LVF : 190 kVA 150 LCC : 240 kVA													

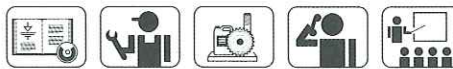
MCR 225 A - 60 Hz													hp	kW													
	75 LVF 35	m/min	0	→	40	→	46	→	81	→	96	0	→	20	→	23	→	41	→	48	75	55	766 m				
	Optima	t	7		6		3		2,25	14		12		6		4,5											
	100 LVF 35	m/min	0	→	52	→	62	→	108	→	140	0	→	26	→	31	→	54	→	70	100	75	1146 m				
	Optima	t	7		6		3		1,75	14		12		6		3,5											
	150 LCC 35	m/min	0	→	84	→	100	→	124	→	166	→	200	0	→	42	→	50	→	62	→	83	→	100	150	110	1004 m
		t	7		5,25		3,5		1,75		0,875	14		10,5		7		3,5		1,75							
	100 V VF 40	m/min	2 min											100	75												
	RVF 162 Optima +	rpm	0 → 0,7											2 x 7,5	2 x 5,5												
CEI 38			IEC 38											kVA													
480 V (+6% -10%)														75 LVF : 165 kVA 100 LVF : 190 kVA 150 LCC : 270 kVA													

GB

- Hoisting
- Luffing
- Slewing



This commercial document is not legally binding.
For any technical information, please refer to the corresponding instructions.



Americas

Tel : +1 888 479 7278
Tel : +1 717 593 2000

Europe - Middle East - Africa

Tel : +33 (0) 4 72 81 50 00
Tel : +44 (0) 191 522 2000

Asia - Pacific

Tel : +65 6264 1188
Fax : +65 6862 4142

www.manitowoccrane.com

Manitowoc Crane Group Asia Pte Ltd

Manitowoc Crane Group

4 Kwong Min Road
Singapore 628707

Tel: +65 6264 1188
Fax: +65 6862 4040
www.manitowoccrane.com

MCR 225 A

Réf. 2006 06 MDM 1

Copyright.Reproduction interdite © POTAIN 2006

Réalisation Sedoc